

WHAT DO YOU WANT TO SAY?

WHAT'S THIS ABOUT?
Make your own signs or posters that represent something you care about.

WHAT WILL YOU NEED?



PENCIL AND PAPER



THESAURUS
(optional but helpful)



ANY ARTMAKING MATERIALS YOU WANT!

Notes for Caregivers: The children in your care may have had a stressful year. Have a conversation with them about how they have felt this past year, and how they are feeling now. Creating art using words and symbols can be a meaningful way to express the emotions and ideas of our youth.

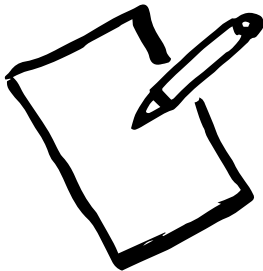
☆ *Use the prompts below to help guide you in your word art.*

PART I: WHAT DO YOU WANT TO SAY?



Think of the following words, and write down (or talk through) what you think of when you hear/read them:

Happy
Worried
Excited
Thoughtful
Caring
Upset
Hopeful



What words would you use to describe the world that you live in?
Are there any words not listed that you would like to include? Write (or think of) the words.



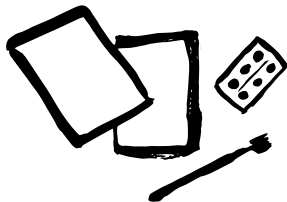
PART II: LET'S CREATE!

Using words that you have connected with, design them into a poster or sign.



Choose one word from the list, draw the word out large onto a page.

Be creative with how you design your letters! You can create squiggly lines, sharp lines, circles, play around with designing letters using different shapes.



Using that one word, find other words that are connected to it using a thesaurus if needed. For example, the word "hopeful" can be broken down into more words like; dreaming, confident, optimistic, and promising. Take these connected words, and make them smaller on the page surrounding your large word.



Decorate the entire page as you wish.

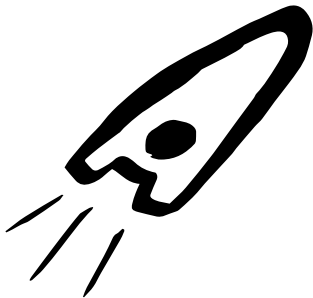
PART III: CONNECTION AND REFLECTION

Reflecting on this past year and the year ahead, tell a story using the words chosen.

What is important to you?

Using the chosen words, and thinking about what is important to you, tell a story about how you can make a difference in your neighbourhood.

If you could give the world a message, what would you want to say?



SHARE YOUR MESSAGE WITH US

Turn your message into another sign or poster, and share with #WallachKids so we can help take your message worldwide!



**WALLACH
ART
GALLERY**

Wallach Art Gallery
Lenfest Center for the Arts
Columbia University
in the City of New York
615 West 129th Street
New York, NY 10027

FIND MORE
ACTIVITY GUIDES HERE:
wallach.columbia.edu/wallach-kids

